

# Event Venues

@ Jewel Changi Airport

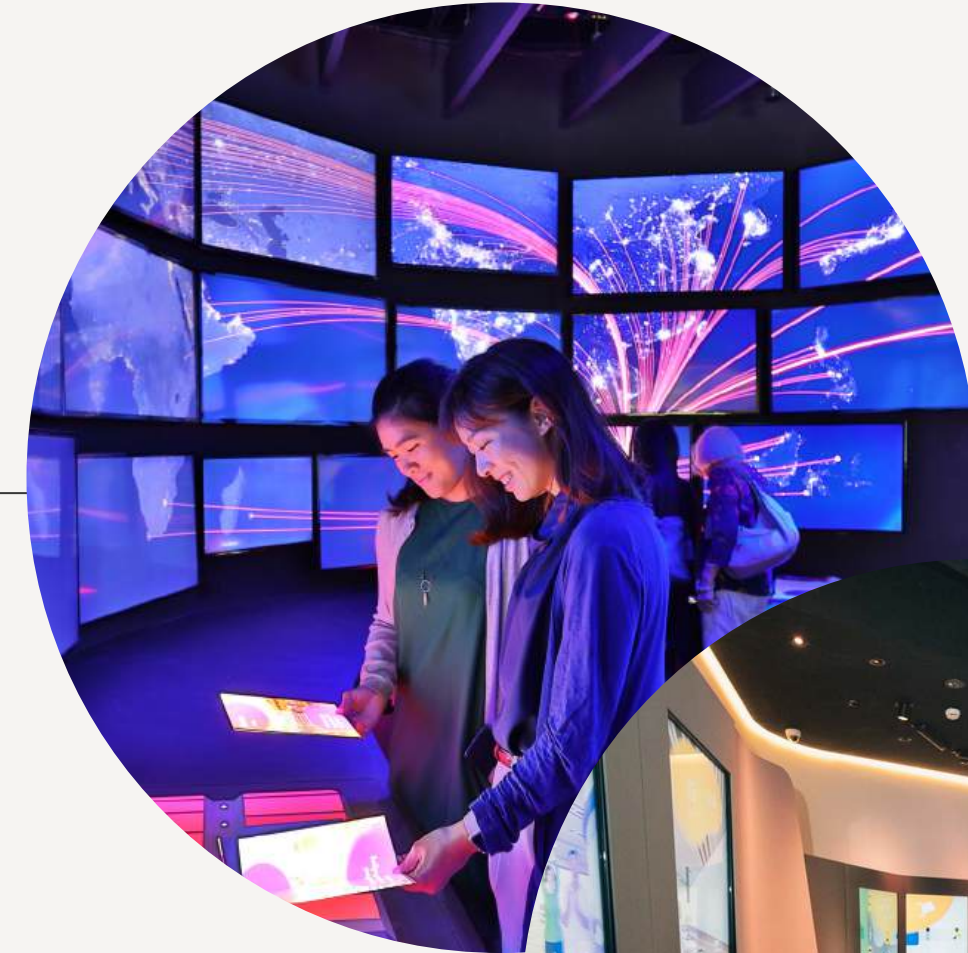


# ABOUT CHANGI EXPERIENCE STUDIO

CHANGI  
EXPERIENCE  
STUDIO

In this first-of-its-kind digital attraction about Changi Airport, experience the wonder of technology that is first-in-Asia and uncover the secrets of the world's best airport through projection exhibits and experiential touchpoints, including interactive games and immersive shows. With over 10 content zones and 20 touchpoints, visitors - young and old alike and including corporate guests - will be blown away by the fascinating journey of discovery through the exciting virtual world of Changi Airport.

**Located within this 3,000sqm studio is a range of unique event venues and meeting spaces which promises to deliver an engaging event experience that is truly like none other.**





# PAST CORPORATE CLIENTS



and more...



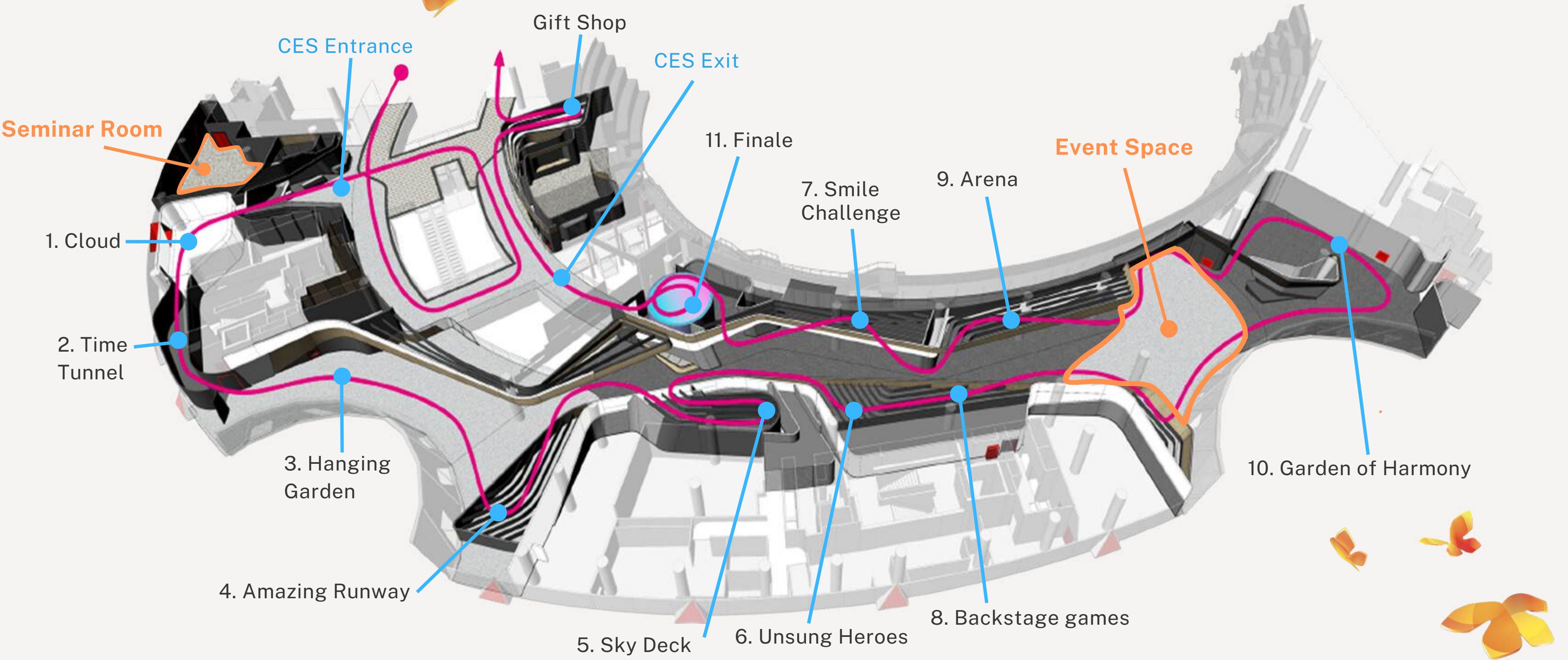
# CHANGI EXPERIENCE STUDIO MAP



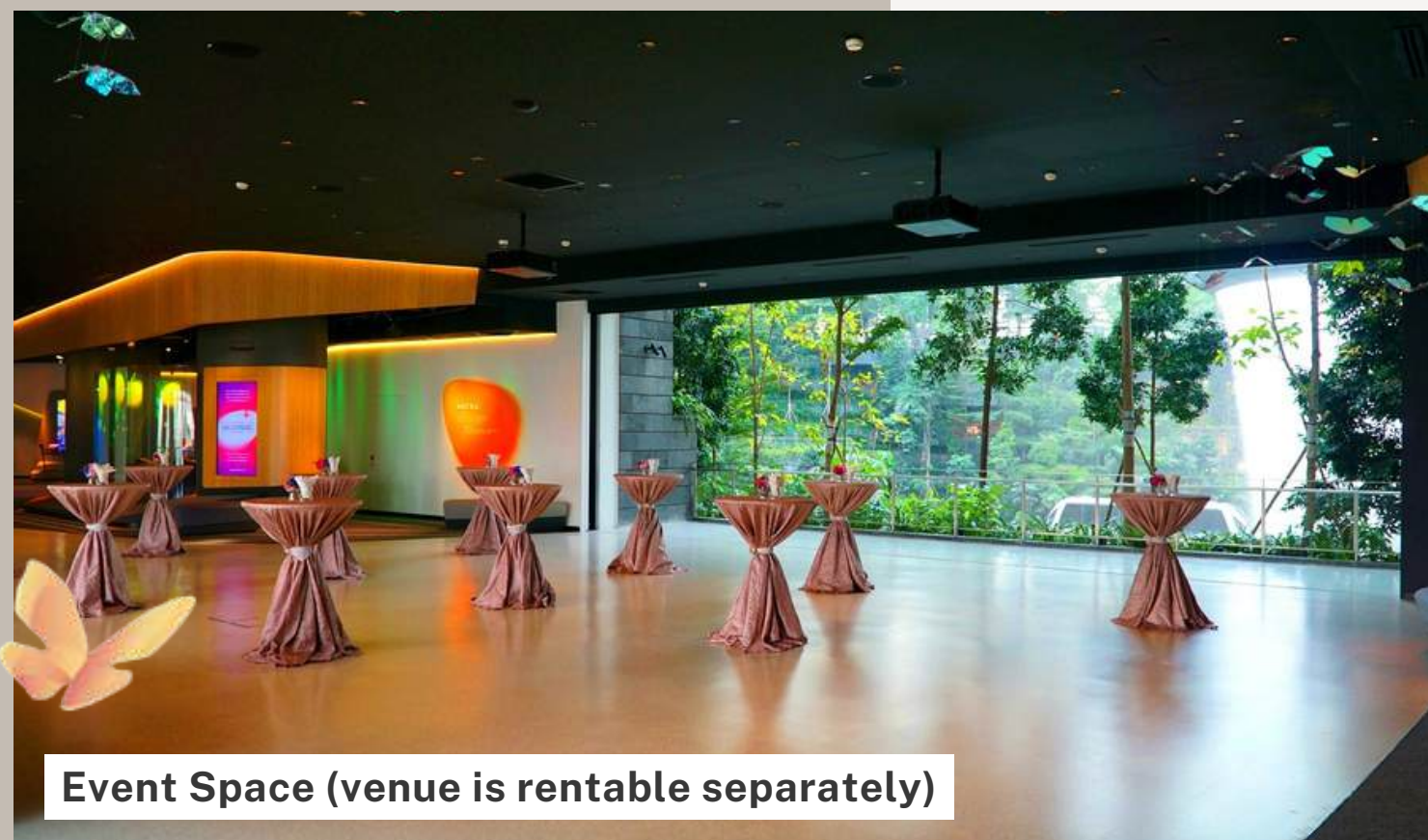
Level 4



3,000 sqm



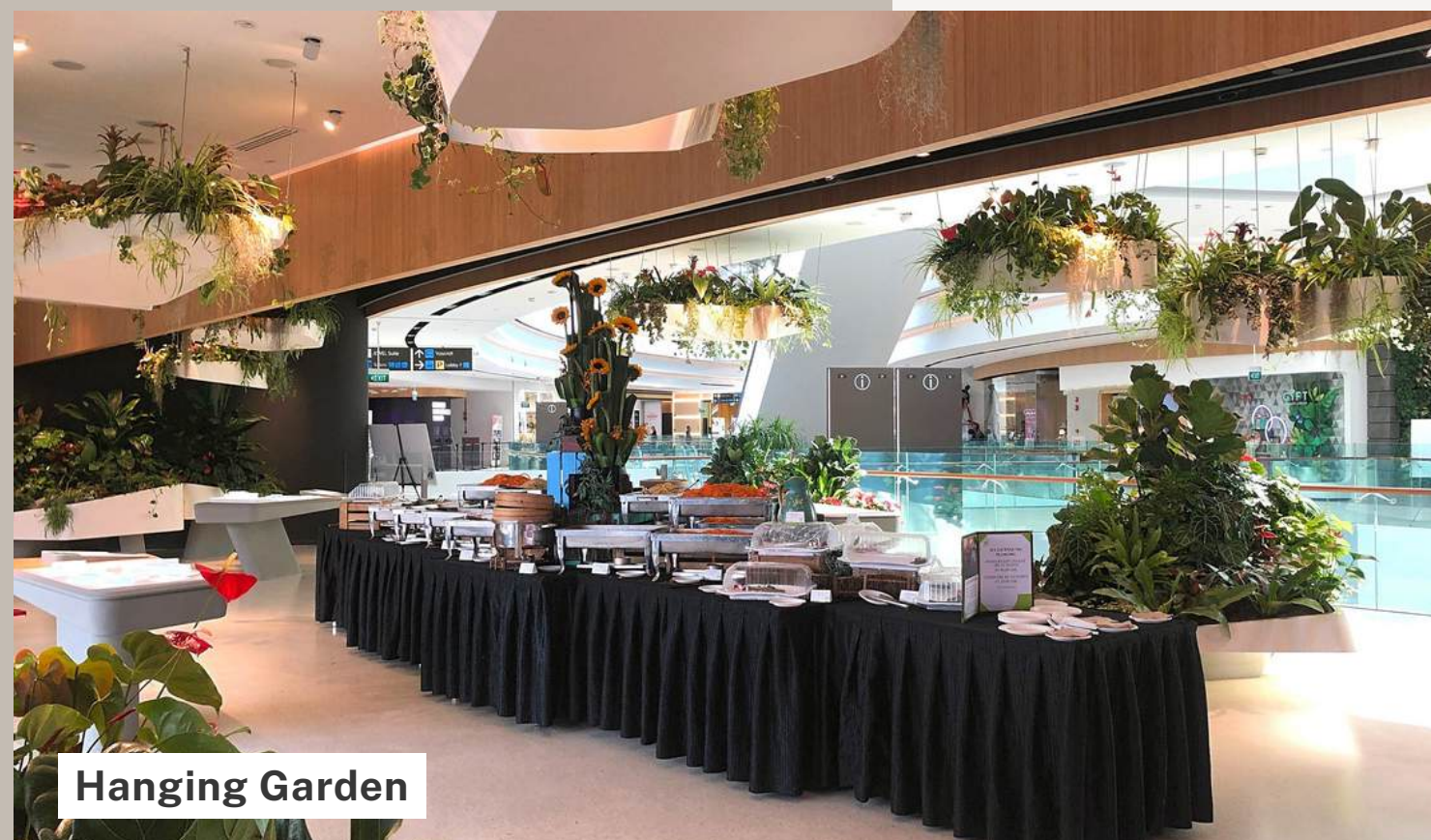




# EXCLUSIVE STUDIO BUYOUT FOR PRIVATE EVENTS



With a spacious layout in the studio providing ample mingling space, and a unique central event space located in its heart, Changi Experience Studio is an ideal venue for networking receptions, corporate lunch and dinner, conferences, company townhalls, family day events, corporate retreats, and team building events. Within the studio, there is an exclusive 12m-long balcony offering panoramic and unblocked views of the Jewel Rain Vortex, making for a stunning backdrop guaranteed to impress your guests.



3,000 sqm



Basic AV Equipment



Buyout > 400 Guests



Complimentary Wifi



Exclusive Balcony with  
a Vantage View of the  
Majestic Jewel Rain Vortex



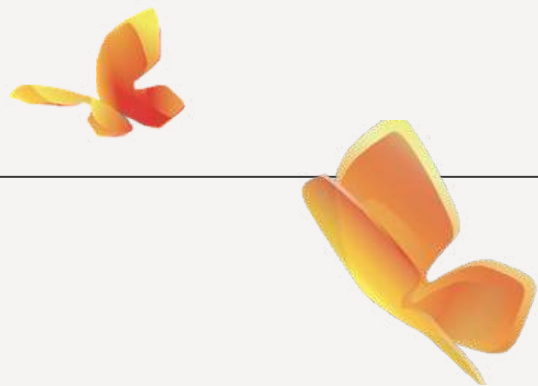
Panel of Renowned Caterers

Event Space (venue is rentable separately)

Hanging Garden



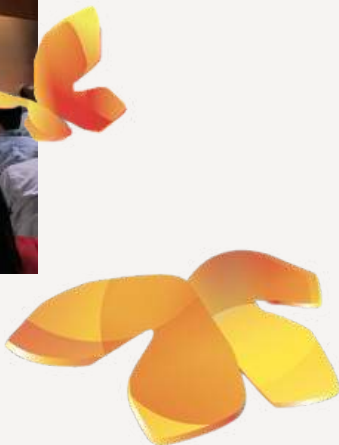
# PAST BUYOUT PRIVATE EVENTS



Family  
Day  
Events

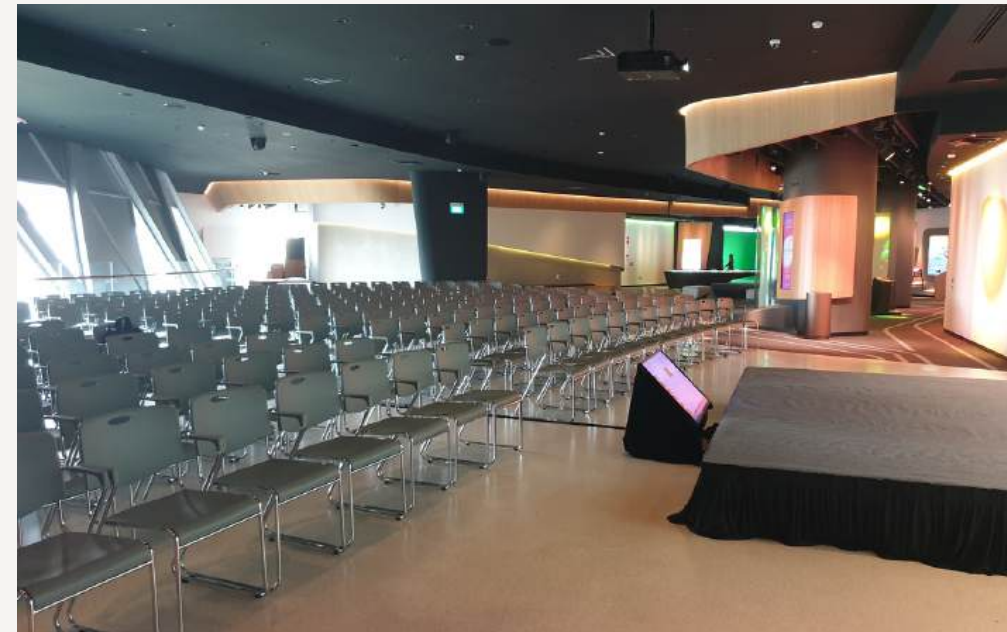
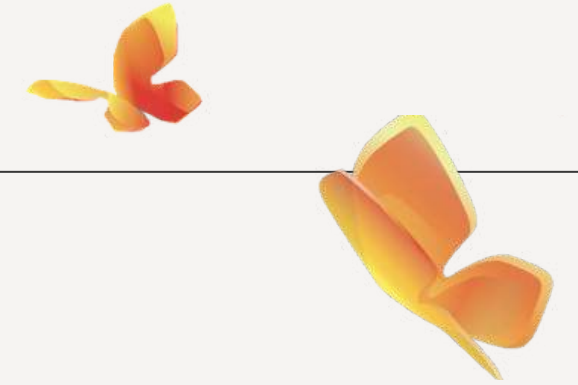


Industry  
Workshop  
Events





# PAST BUYOUT PRIVATE EVENTS



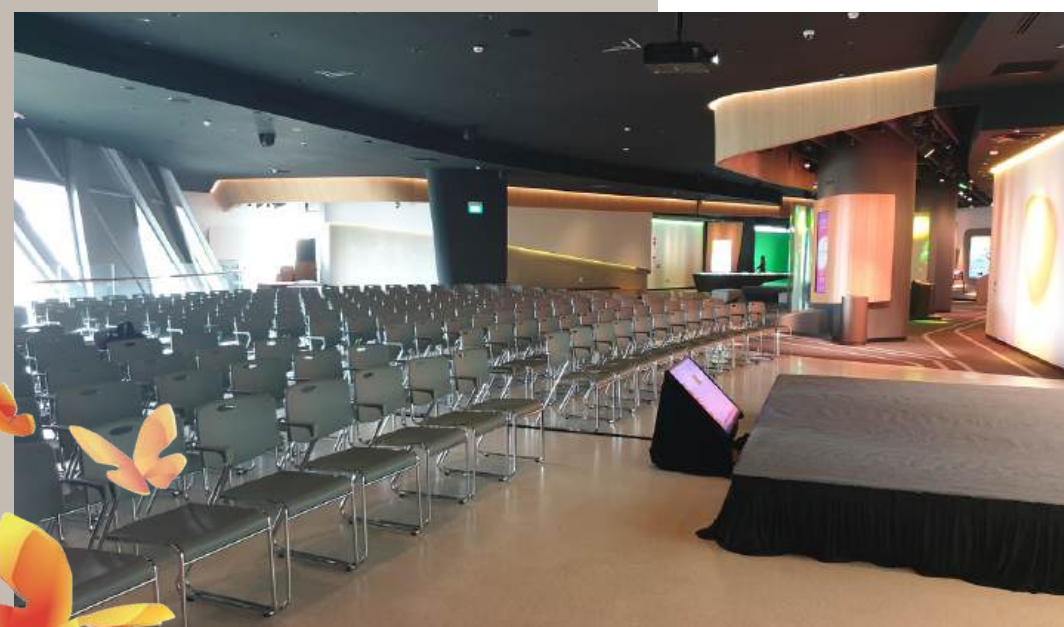
**Corporate  
Conference  
Events**



**Product  
Launch  
Events**














# STUDIO EVENT SPACE- MEETINGS & CONFERENCES

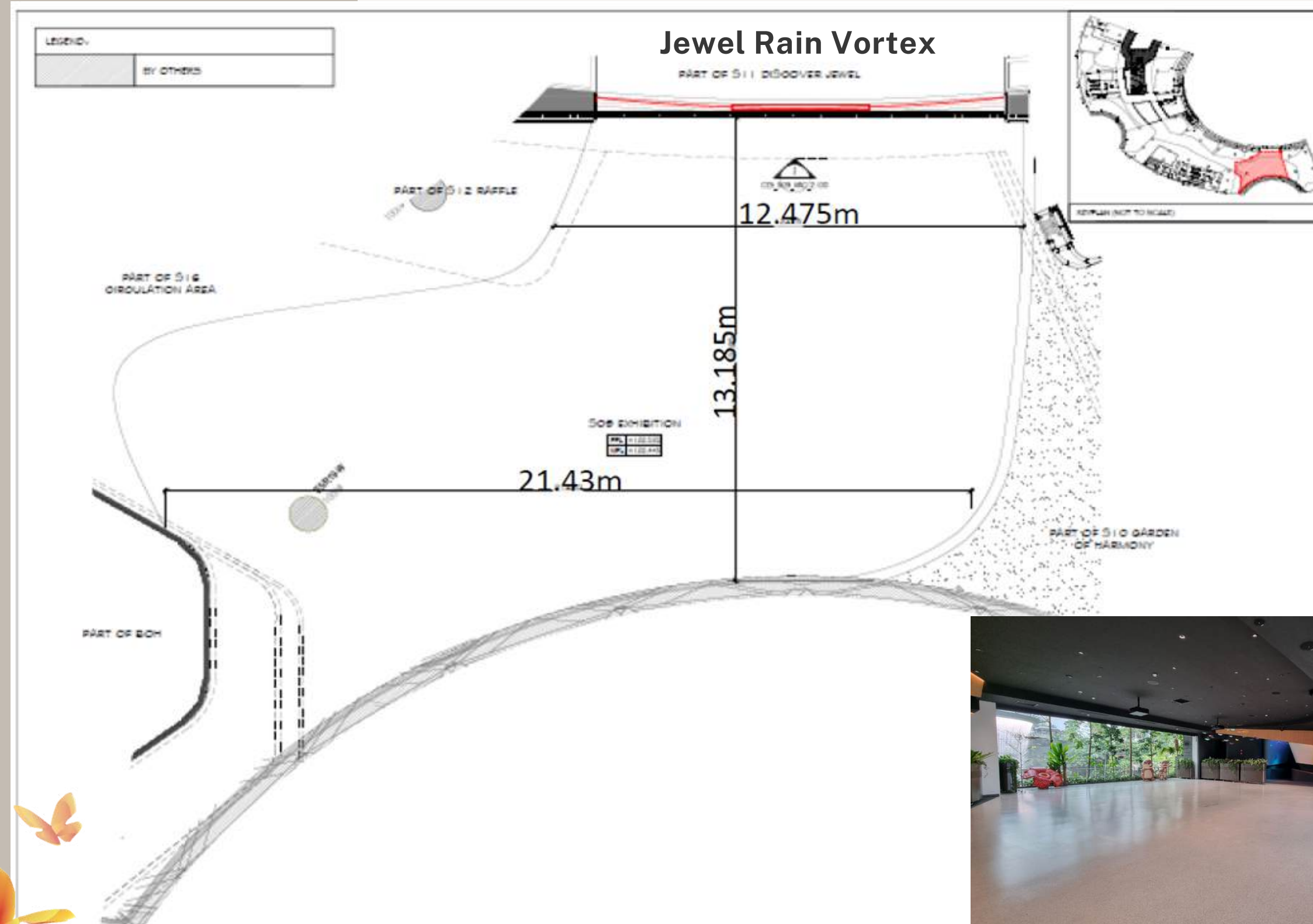
Businesses looking for a unique venue for conferences and corporate meetings will find **Changi Experience Studio's Event Space** an interesting one. Theatre-style conference seating set against full height glass panels offering a picturesque view of the Jewel Rain Vortex, coupled with easy access to engaging interactive exhibits, make for a memorable experience full of enjoyable moments amid your formal programme line-up. Additional AV and logistics set-up can be arranged to meet your specific events needs.



-  205 sqm
-  Theatre: up to 250 seats
-  Double U Shape ~ 45 seats
-  Basic AV Equipment
-  Complimentary Wifi
-  Panel of Renowned Caterers
-  Exclusive Balcony with a Vantage View of the Majestic Jewel Rain Vortex



# FLOORPLAN OF THE EVENT SPACE



205 sqm



Theatre: up to 250 seats



Double U Shape ~ 45 seats



Basic AV Equipment



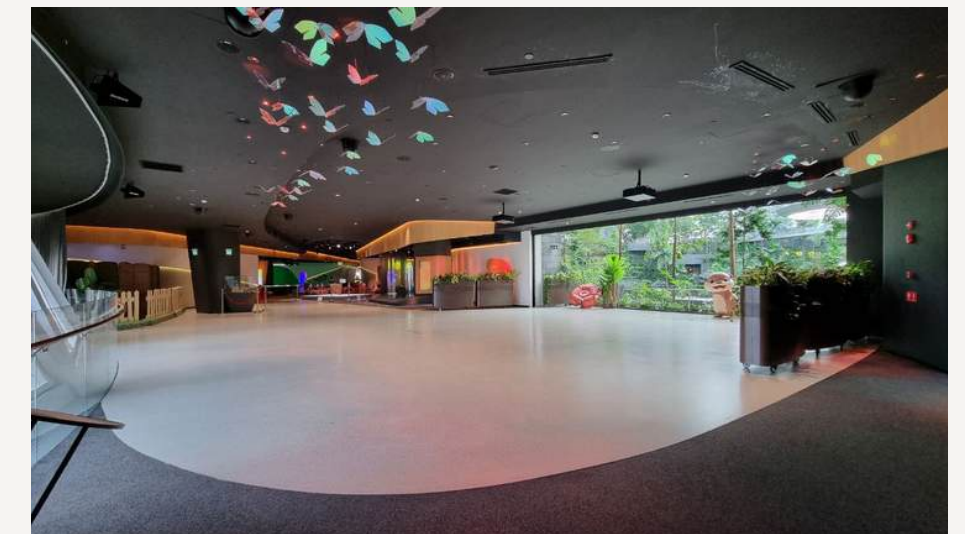
Complimentary Wifi



Panel of Renowned Caterers

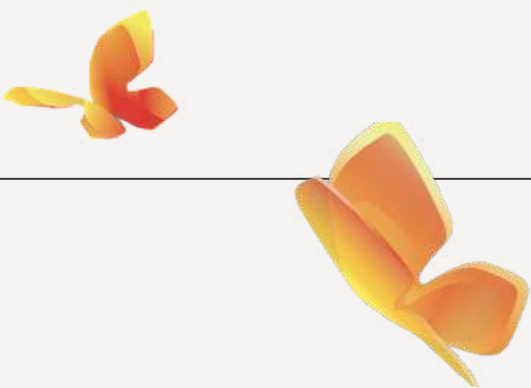


Exclusive Balcony with a Vantage View of the Majestic Jewel Rain Vortex





# PAST CORPORATE MEETINGS & CONFERENCES



**Management  
Annual Work  
Plan Retreat**

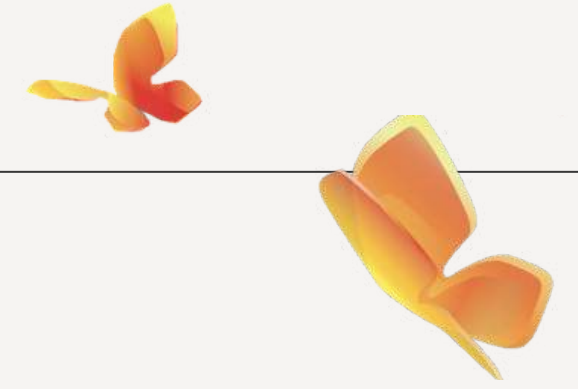


**Grassroots  
and  
Community  
Engagement**





# PAST CORPORATE MEETINGS & CONFERENCES



**Media  
Reception**

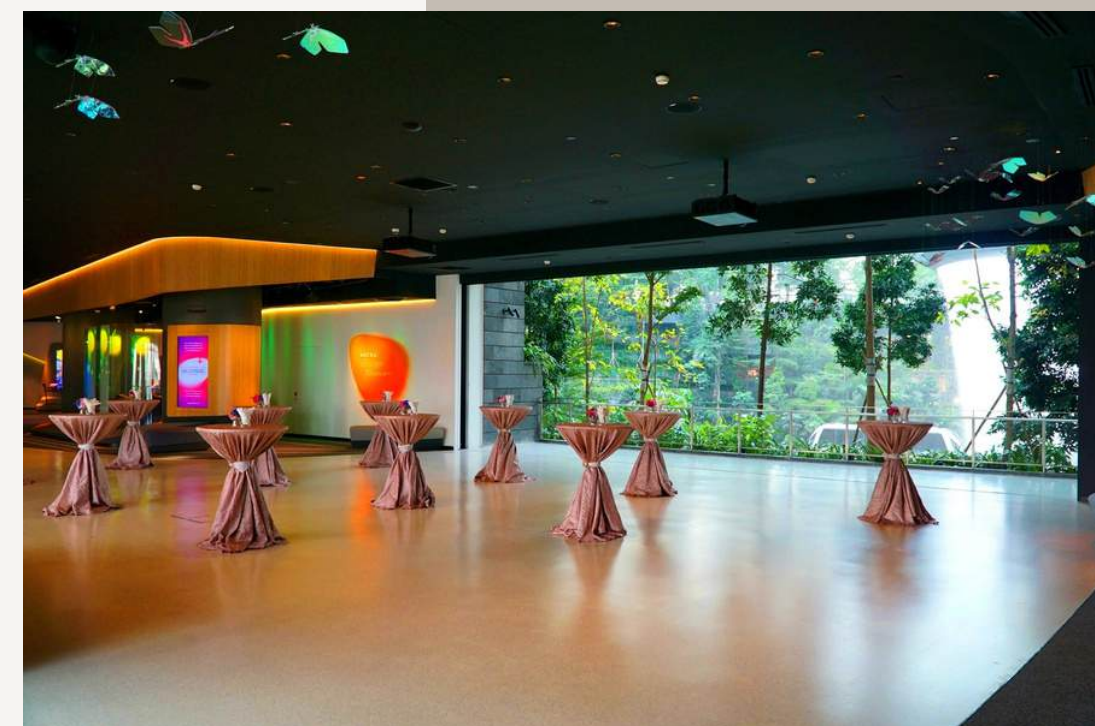




# STUDIO EVENT SPACE – RECEPTIONS & BANQUETS



In **Changi Experience Studio's Event Space**, a variety of different event settings are possible, including formal cocktail receptions and sit-down lunch or dinner events. A well-equipped kitchen located within the studio, in close proximity to the event space, allows for a wide variety of catering options to be provided by established catering partners. The event space comes with basic AV set-up and equipment needed for presentations and speeches.



205 sqm



Standing Cocktail: up to 150 pax



Banquet: up to 12 rounds of 10 seats



Basic AV Equipment



Complimentary Wifi



Panel of Renowned Caterers



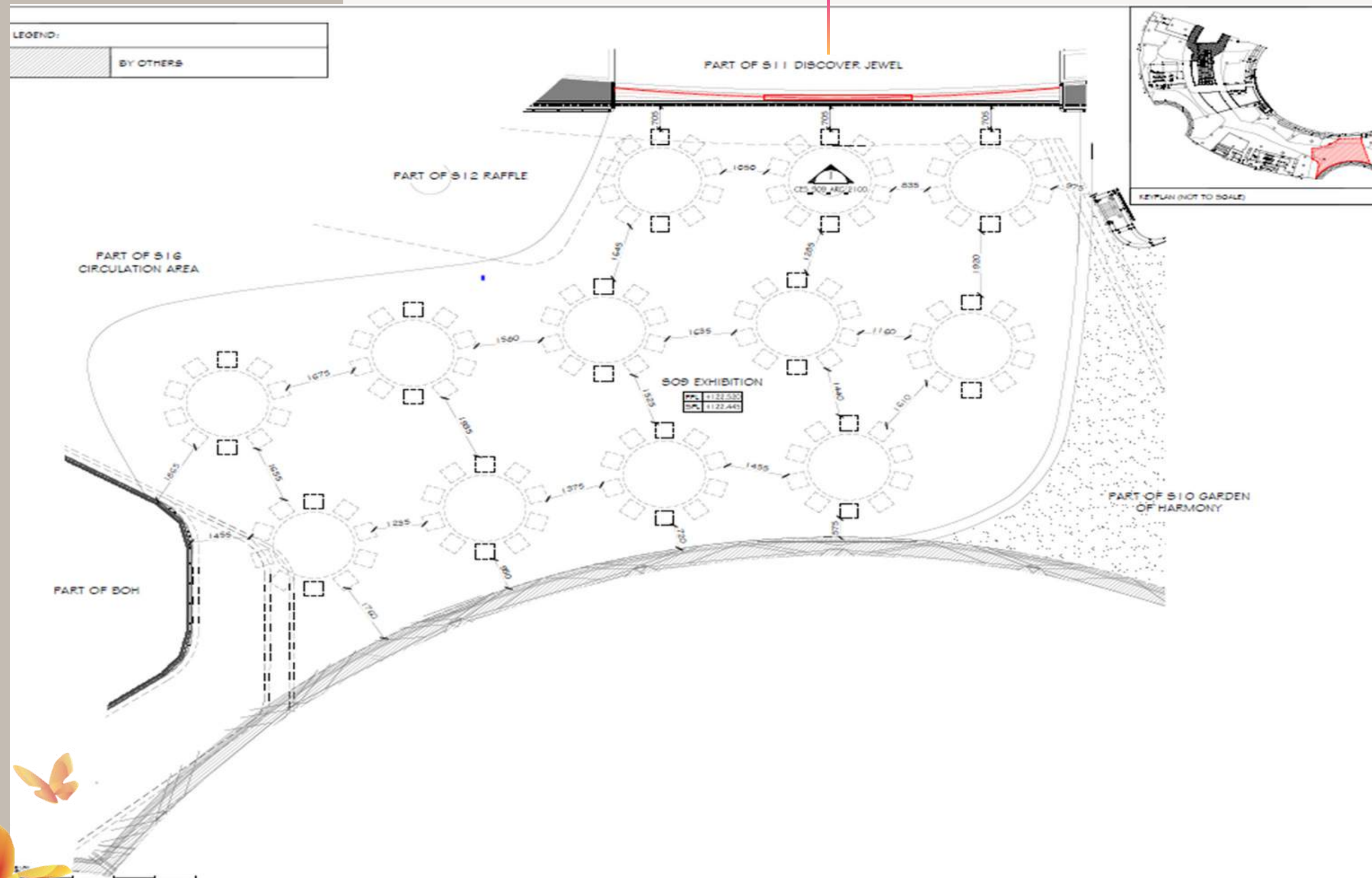
Exclusive Balcony with a Vantage View  
of the Majestic Jewel Rain Vortex





# BANQUET LAYOUT

## Jewel Rain Vortex



205 sqm



Standing Cocktail: up to 150 pax



Banquet: up to 12 rounds of 10 seats



Basic AV Equipment



Complimentary Wifi



Panel of Renowned Caterers

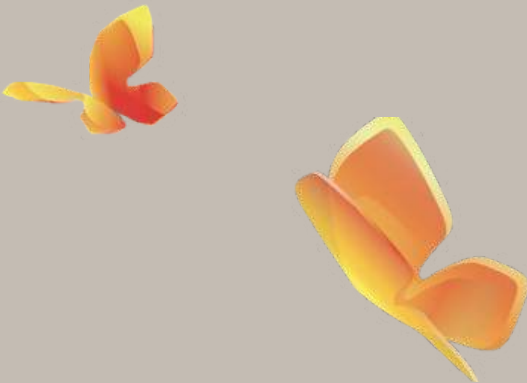


Exclusive Balcony with a Vantage View of the Majestic Jewel Rain Vortex





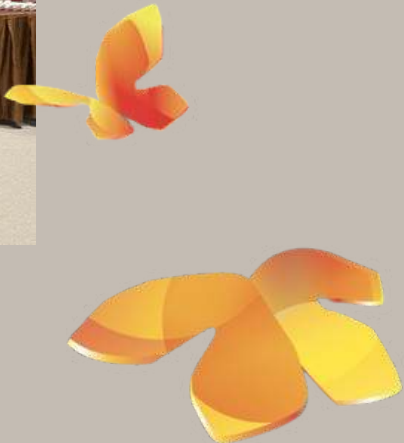
# PAST COCKTAIL RECEPTION & BANQUET EVENTS



**Banquet  
Events**



**Cocktail  
Reception**





# SEMINAR ROOM



Located in the vicinity of Changi Experience Studio is a well-equipped seminar room for workshops, training sessions, corporate meetings, and cosy private functions. Furnished with basic AV equipment, the room can be configured in different settings, such as cluster or theatre-style seating to suit your events needs.

*Layout and maximum capacity: Theatre (up to 120 seats), Cluster (7 sets of 6 seats), Banquet (5 rounds of 10 seats)*

***Please contact us for more information about the seminar packages.***



132 sqm



Flipchart Board and Whiteboards with Coloured Markers



Basic AV Equipment



Complimentary Wifi



Panel of Renowned Caterers

***Banquet setting***



***Cluster setting***

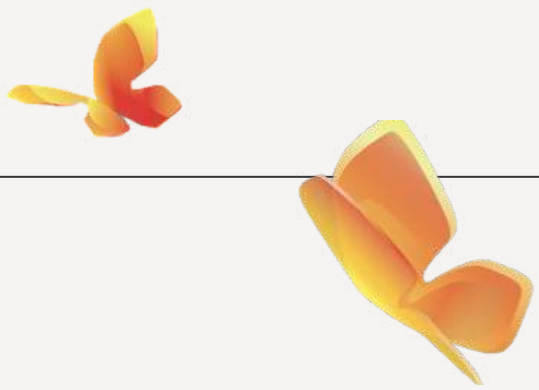


***Theatre setting***





# PAST EVENTS AT THE SEMINAR ROOM



**Family  
Day  
Events**



**Corporate  
Seminar  
Events**





# VALLEY VIEW PRIVATE SUITE

With a formal boardroom section equipped with meeting facilities and an attached lounge area providing luxurious comfort, the suite is ideal for board and senior management meetings, as well as hosting distinguished guests. The highlight of the room is the open balcony overlooking the Shiseido Forest Valley, providing idyllic views of the valley's lush greenery, perfect for a relaxing tea reception in a garden setting.



92 sqm



≤ 30 Guests



Basic AV Equipment



Complimentary Wifi



Panel of Renowned Caterers



Exclusive Balcony with a Vantage View of the Majestic Jewel Rain Vortex

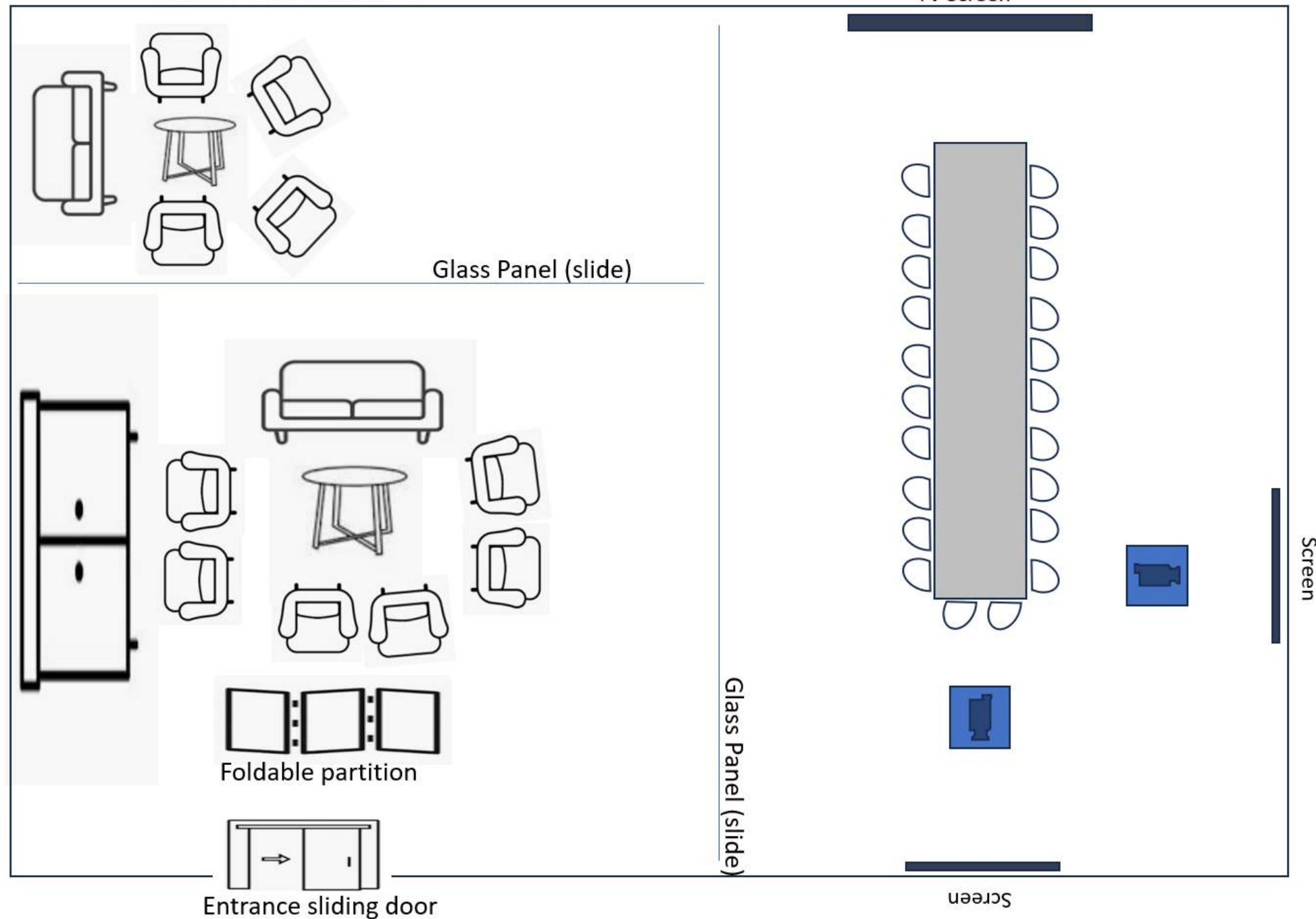




# BANQUET LAYOUT



Balcony



## Valley View Private Suite

Not drawn to scale  
For reference only



92 sqm



≤ 30 Guests



Basic AV Equipment



Complimentary Wifi



Panel of Renowned Caterers



Exclusive Balcony with a Vantage View of  
the Majestic Jewel Rain Vortex





# PAST EVENTS AT THE VALLEY VIEW PRIVATE SUITE

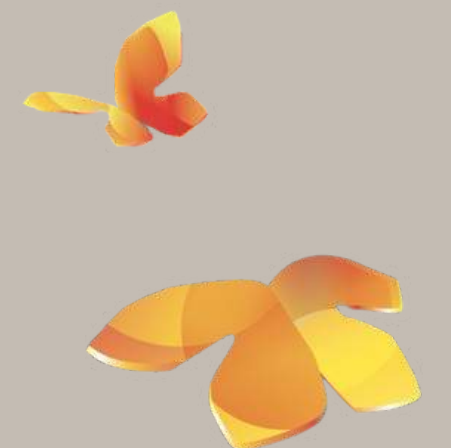
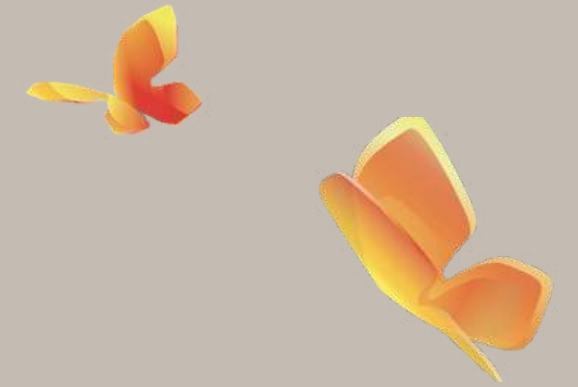
---



**Corporate  
Workshops**



**Family Day  
Events**







# HALAL CERTIFIED CATERING PARTNERS



**3 Embers Culinary  
Craft**



**Amici Events and Catering**



**Casserole Catering**



**CaterCo Concepts**



**Catering Culture**



**Chilli Manis**



**Curate Kitchen**



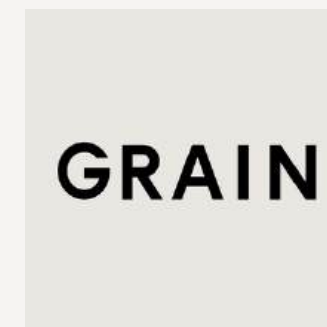
**Deli Hub Catering**



**Elsie's Kitchen**



**Four Seasons Catering**



**Grain**



**How's Catering**



**Island Catering**



**Lavish Dine Catering**



**Manna Pot Catering**



**Orange Clove Catering**



**Premium Catering**





# HALAL CERTIFIED CATERING PARTNERS



Rasel Catering



Scrumptious



Serangoon  
BBQ & Curry



Shiok Kitchen Catering



Stamford Catering

# HOTEL / RESTAURANT CATERING PARTNERS



Conrad Singapore  
Marina Bay



Jumbo Group



Mandarin Oriental  
Singapore



Peach Garden



# OTHER CATERING PARTNERS



Creative Eateries



Luxe Catering



Purple Sage

# BEVERAGE PARTNERS



Mixes from Mars



Tanamera



The Shake Affinity







# ADDITIONAL ACTIVITIES

- **Team Bonding**
- **Unique Workshops**
- **Learning Journeys**
- **Overnight Camps**
- **Festive Parties at Changi Experience Studio**

For further enquiries, please contact us at [ces.sales@changiairport.com](mailto:ces.sales@changiairport.com)



# DIRECTIONS



Changi Experience Studio and Valley View Private Suite is located on **level 4 of Jewel Changi Airport, near lobby F and lobby C.**

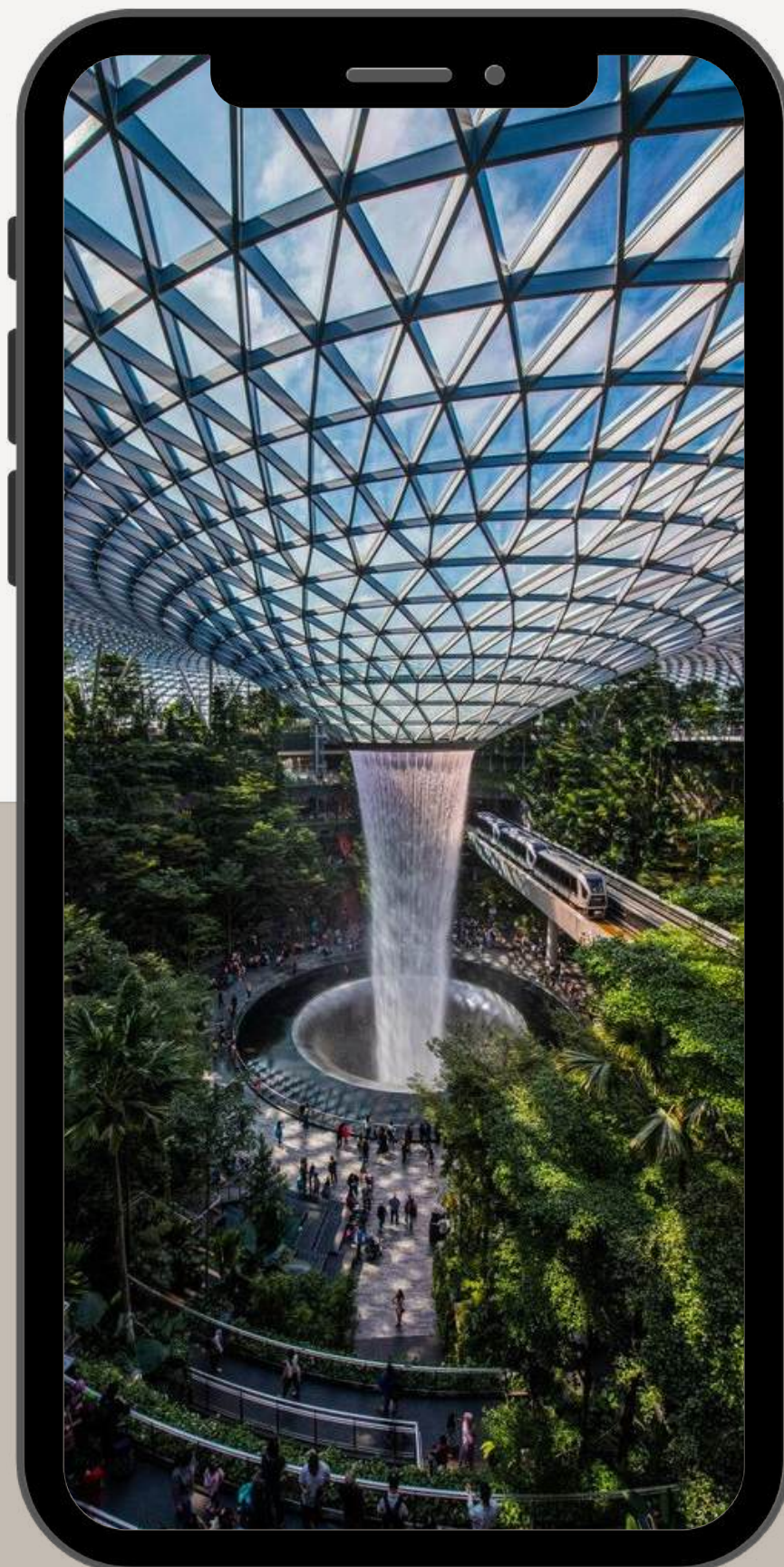
## Directions to Changi Experience Studio and Valley View Private Suite



1. **By Car:** please park at Levels B3 – B5 (General Parking). Take lift from lobby C or F to Level 4.
2. **By Taxi/Grab:** Alight at Jewel's drop-off point (Level 2). Take the escalator outside Apple store to Level 4 and walk ahead.
3. **By MRT:** Alight at Terminal 3's side and take the link bridge to Jewel. From Level 3, take lift from lobby F to Level 4.
4. **By Bus:** Alight at Terminal 1 and cross over to Jewel. Take lift from lobby C to Level 4.







---

# CONNECT WITH US



<https://bit.ly/ChangiAirportVenues>



[ces.sales@changiairport.com](mailto:ces.sales@changiairport.com)