

MAKE SPACE

POSSIBILITIES MAKE SPACE FOR POSSIBILITIES

POSSIBILITIES



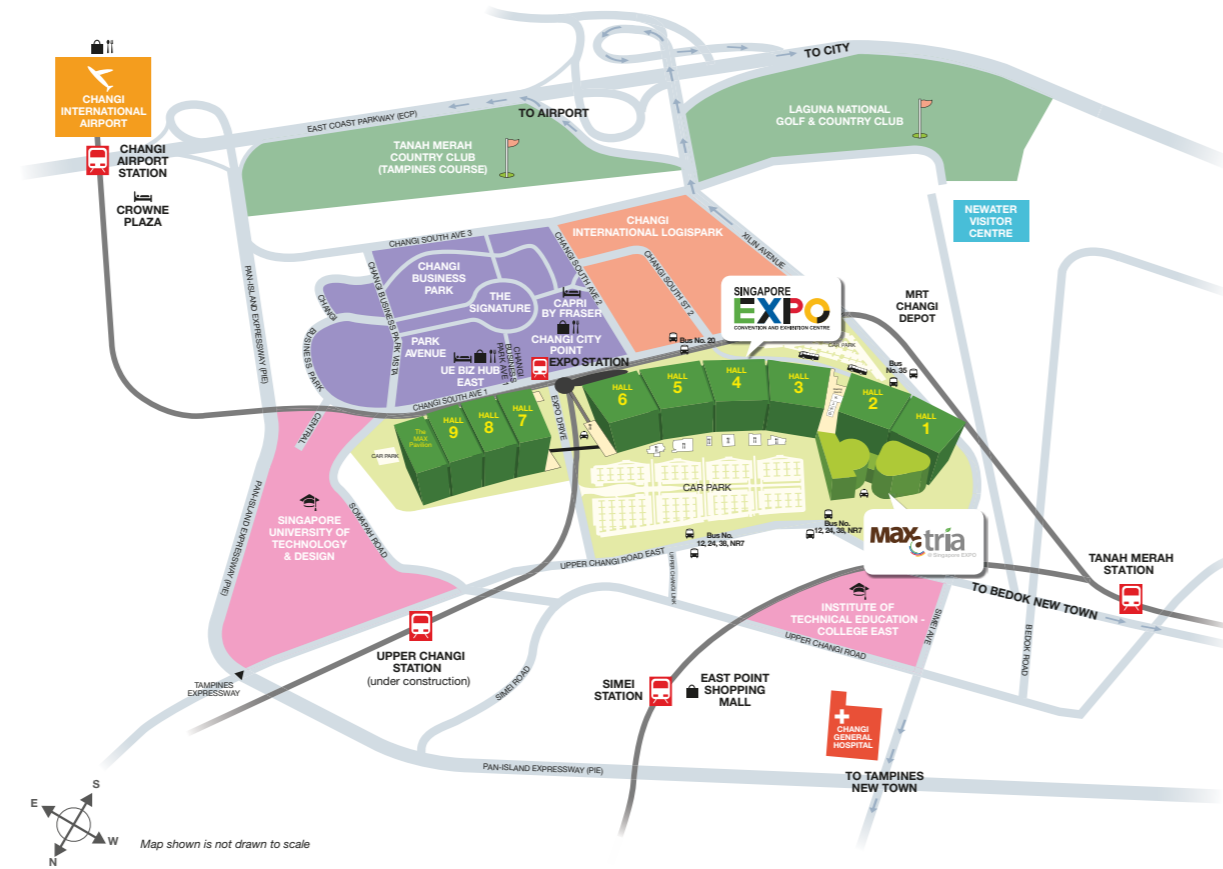
MAKE SPACE FOR POSSIBILITIES

FOR POSSIBILITIES

specifications guide

## getting here

Singapore EXPO Convention and Exhibition Centre and MAX Atria stand right at the doorstep of Changi Business Park (CBP), a leading business hub comprising high technology firms, knowledge-intensive facilities, and multi-national companies in the banking, finance and logistics industries. Recent developments further enhanced CBP as an active urban ecosystem, incorporating business hotels, serviced residences, offices and retail spaces as well as a green garden environment. In addition, the Singapore University of Technology and Design will also be a mere stone's throw away by 2015.



### by car

Situated at the crossroads of 3 main expressways – East Coast Parkway, Pan Island Expressway and Tampines Expressway, EXPO is a mere 15-minute drive from Central Business District (CBD) and a 5-minute ride to Changi International Airport.

### by taxi

There are numerous taxis available in Singapore that offer reliable service. The taxi fare from airport to Singapore EXPO is about \$15 and to the city about \$20 subject to surcharges.

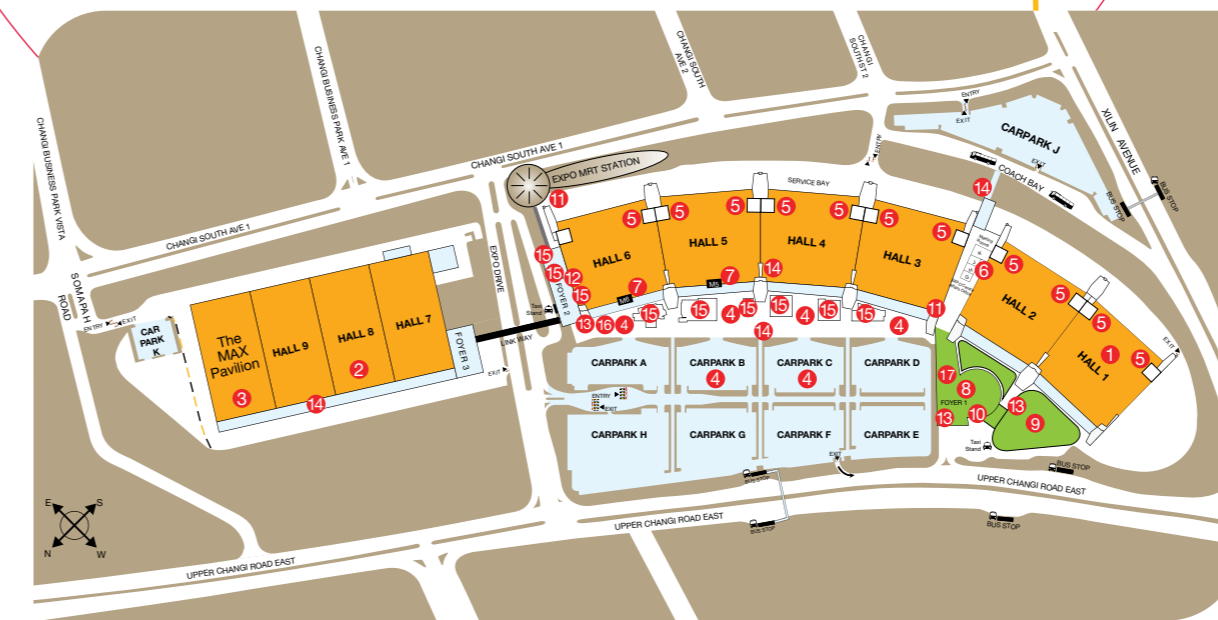
### by train

Singapore EXPO has a dedicated Mass Rapid Transit (MRT) station, located next to Hall 6. Trains arrive every 5 minutes from Changi International Airport and Tanah Merah MRT station while it takes about 15 minutes from the city location. By 2017, EXPO MRT station will become the interchange for the Downtown Line, which will provide additional transport modes from EXPO to CBD locations such as Clarke Quay, Marina Bay and River Valley.

## venue overview

A top-ranked venue in Asia and the largest purpose-built MICE facility in Singapore, Singapore EXPO covers over 123,000sqm of indoor and outdoor space, comprising convention-exhibition and conference halls, meeting rooms, and mobile V-rooms, every year. In 2013, Singapore EXPO welcomed more than 7.5 million visitors and over 800 events, ranging from exhibitions, corporate meetings, conventions, award ceremonies, gala banquets, to consumer and trade shows.

Our amenities include 2,500 carpark lots, extensive 3.5G mobile coverage, WIFI access, a well-equipped Business Centre, Internet kiosks, automated teller machines (ATMs), nursing rooms, prayer rooms, and energy-saving building automation systems, and dedicated concierge services.



Map shown is not drawn to scale

## facilities

- Convention-Exhibition Halls 1 to 6**
  - Each hall offers approximately 10,000sqm (108,000sqft) measuring 99.6m (L) X 96.4m (W) of ground-level column-free space
- Convention Exhibition Halls 7-9**
  - Each hall offers approximately 10,000sqm (108,000sqft) measuring 144m (L) X 69 (W) of ground-level column-free space
- The MAX Pavilion – A multi-purpose Event Hall**
  - Approximately 10,000sqm (108,000sqft) measuring 144m (L) X 69 (W)
- Open Exhibition Space**
  - 8,214sqm (88,382sqft) at Carparks B & C
  - 2,080sqm (22,380sqft) at Atrium 3 to 6
- Rooms 1A - 6A**
  - Within Halls 1 to 6
- Conference Halls G, H, J & K**
  - 4 acoustically partitioned conference halls; seating capacity ranges from 80 to 220 pax
- Meeting Rooms M5 to M6**
  - Above Halls 5 to 6 on Level 2
- MAX Atria Meeting Rooms (Levels 1 & 2)**
  - Opal 101-107
  - Peridot 201-206
  - Tourmaline 207-209
- MAX Atria Meeting Rooms (Level 2)**
  - Citrine 210-211
  - Garnet 212-219
  - Topaz 220-225
- ATM / AXS Machine**
- SingEx Management Office (Level 2)**
- Nursing Room**
- Concierge (Level 1)**
- Cashcard Top-Up Station**
- F&B Outlets (Level 1 of EXPO & Level 2 of MAX Atria)**
- Prayer Room (Level 2)**
  - Above Hall 6
- Business Centre (Level 1)**
  - One-stop shop for IT/Telecommunication services
  - Rental of equipment
  - Secretarial services
  - E-mail and web-access services

# convention exhibition halls 1 to 6

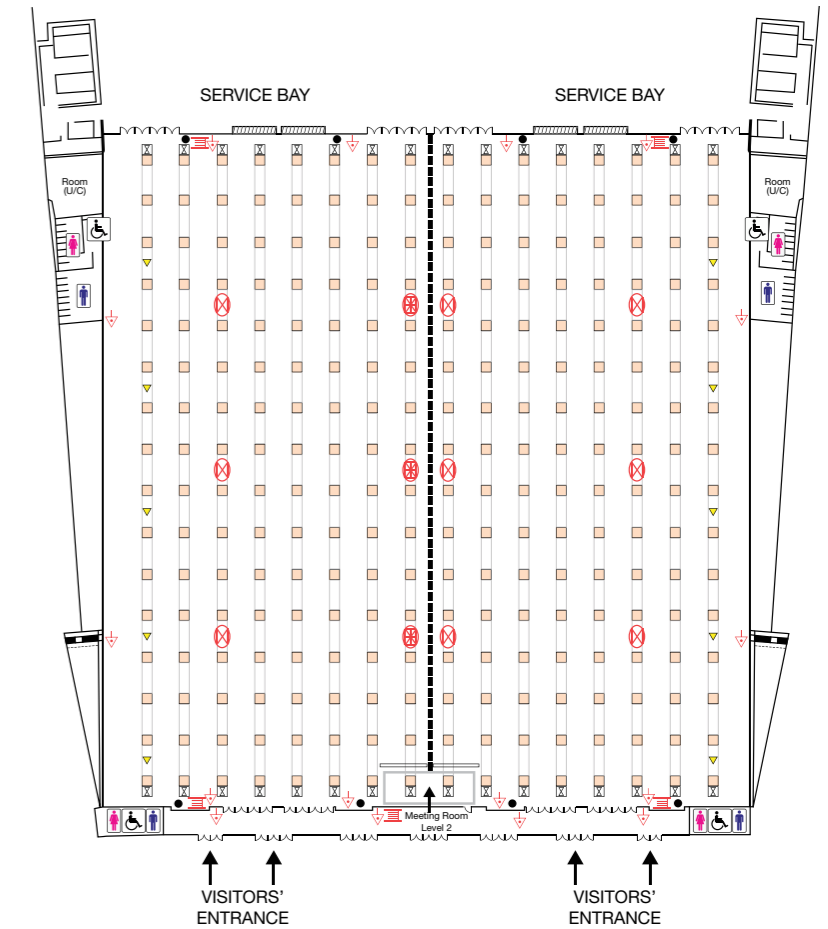


## general specifications of each hall

Area	<ul style="list-style-type: none"> <li>Ground-level, column-free space</li> <li>Halls 1 and 6: 9,822sqm (105,685sqft) each</li> <li>Halls 2, 3, 4 &amp; 5: 10,043sqm (108,063sqft) each</li> <li>Each measuring 99.6m (L) X 96.4m (W) [326.7ft (L) X 316.2ft (W)]</li> <li>10m to 16m (32.8ft to 52.5ft)</li> </ul>
Ceiling Height	<ul style="list-style-type: none"> <li>Acoustic metal between purlins and exposed steel structure</li> </ul>
Ceiling Materials	<ul style="list-style-type: none"> <li>Panic-bolt doors (electronically controlled)</li> <li>4 sets of 4 double leaf doors each at front and rear of hall</li> <li>Each double leaf door size: 1.8m (W) X 2.3m (H) [5.9ft (W) X 7.5ft (H)]</li> </ul>
Entrance & Exits	<ul style="list-style-type: none"> <li>Sealed concrete</li> <li>30KN/sqm or 627lb/sqft</li> <li>4 sets at service area each measuring 7.3m (W) X 5.9m (H) [23.9ft (W) X 19.4ft (H)]</li> <li>6 openings between each hall each measuring 45m (W) X 6m (H) with operable walls</li> </ul>
Flooring	<ul style="list-style-type: none"> <li>Sealed concrete</li> </ul>
Floor Loading	<ul style="list-style-type: none"> <li>30KN/sqm or 627lb/sqft</li> </ul>
Freight doors	<ul style="list-style-type: none"> <li>4 sets at service area each measuring 7.3m (W) X 5.9m (H) [23.9ft (W) X 19.4ft (H)]</li> <li>6 openings between each hall each measuring 45m (W) X 6m (H) with operable walls</li> </ul>
Hall connectivity	<ul style="list-style-type: none"> <li>4 male, 4 female and 4 toilets for the physically challenged in each hall</li> </ul>
Toilets	

## mechanical & electrical specifications of each hall

CATV	<ul style="list-style-type: none"> <li>Connections are possible for direct broadcasting</li> <li>Cable links for outdoor broadcasting van and satellite dishes</li> <li>300 Lux</li> <li>16 communication points per service trench</li> <li>Each point: 4 X RJ45 enhanced CAT 5 outlets</li> <li>Total: 1,024 outlets per hall</li> <li>Fibre optics backbone (multi &amp; single mode) and Enhanced CAT 5 cables facilitate connectivity for LAN and WAN</li> <li>Fibre optics connections available at communication compartments at front and rear of hall</li> </ul>
Ceiling lighting	
Communication	
Compressed Air	<ul style="list-style-type: none"> <li>54mm diameter connection from ring main</li> <li>Connection points: 16 each at front and rear of hall 5 at side service trench X 18m apart</li> </ul>
Distribution Boards	<ul style="list-style-type: none"> <li>4 sets each at front and rear of hall</li> <li>Each DB: <ul style="list-style-type: none"> <li>12 nos. 32amps - single-phase outlets</li> <li>4 nos. 32 amps - 3 phase outlets</li> <li>4 nos. 63 amps - 3 phase outlets</li> <li>2 nos. 63 amps - 3 phase terminal MCB</li> <li>4 nos. 100 amps - 3 phase terminal MCCB</li> <li>2 nos. 200 amps - 3 phase terminal MCCB</li> <li>4 X 13 amps wall sockets each at front and rear of hall</li> </ul> </li> </ul>
Electrical Loading	<ul style="list-style-type: none"> <li>2,000KVA per hall</li> </ul>
Fire Protection System	<ul style="list-style-type: none"> <li>Fire sprinkler system, hose reels, extinguishers and manual call points are available.</li> </ul>
PA System	<ul style="list-style-type: none"> <li>Available for paging and announcements</li> </ul>
Security	<ul style="list-style-type: none"> <li>Intruder alarm, 2 nos. of indoor pan-tilt-zoom CCTV camera and electro magnetic door locks</li> </ul>
Service Trenches	<ul style="list-style-type: none"> <li>16 nos. at 6m apart across hall, each measuring 0.5m (W) X 0.3m (D) [1.64ft (W) X 0.9ft (D)]</li> </ul>
Suspension Points	<ul style="list-style-type: none"> <li>118 points</li> <li>Loading: 2 tonnes (2,000kg) per point</li> <li>Central air-conditioning system at 23°C</li> <li>54mm diameter connection from ring main</li> <li>Connection points: 16 each at front and rear of hall</li> <li>Floor traps available</li> </ul>
Ventilation	
Water / Sewer Points	



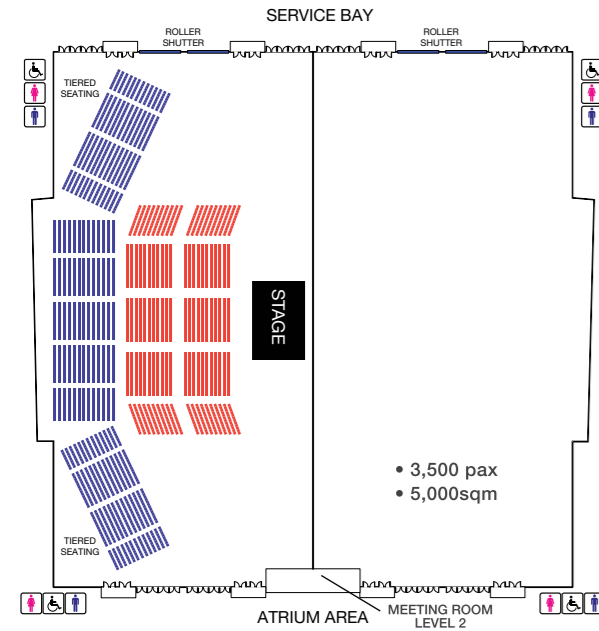
## legend

▼ Air Outlets	● Distribution Boards
⊗ Portable Fire Hose Reel Connection Outlets	▬ Fire Hose Reels
⊗ Additional Portable Fire Hose Reels Connection Outlets in Hall 2, 4 & 6	▽ Fire Extinguishers
⊗ Air, Water Outlets & Sewer Points	▬ Freight Doors
□ Communication Points	♿ Toilets
	--- Visual Curtain in Halls 2, 4 & 6

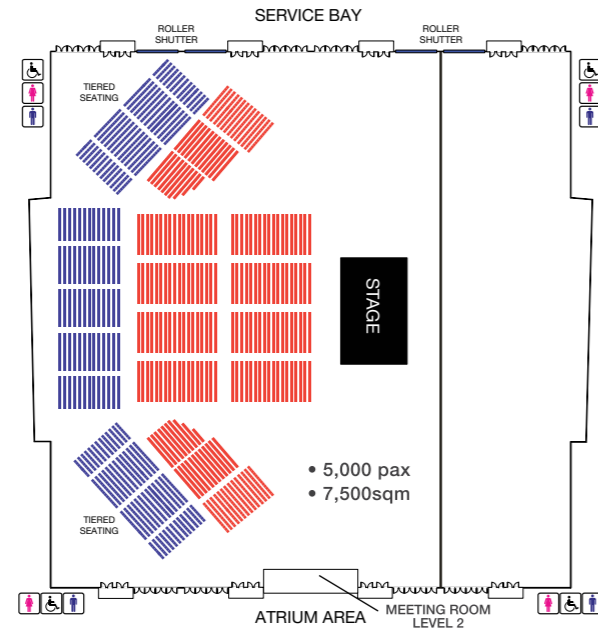
# tiered seating

configuration samples for halls 1 to 6 | stage-front theatre-style

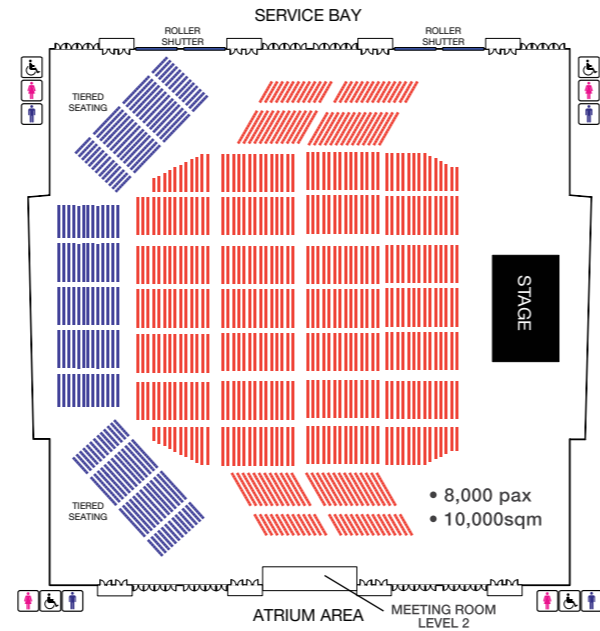
half hall



three-quarter hall



full hall



Plans shown are not drawn to scale

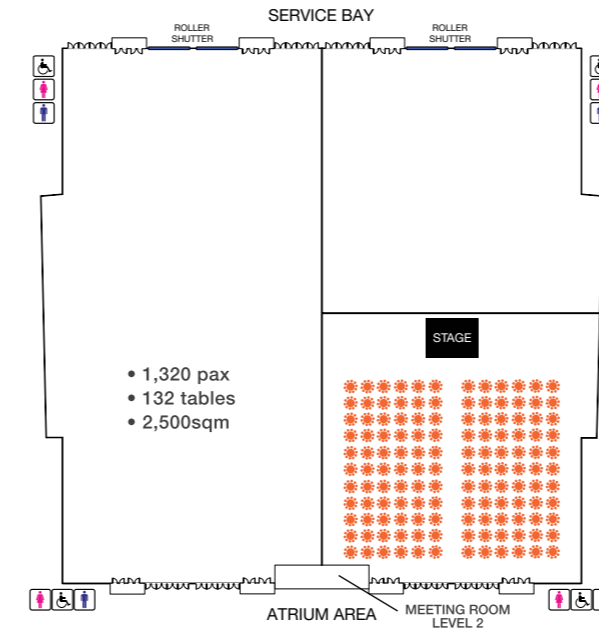
	gross floor plan		dimensions						capacity
	sqm	sqft	metre			feet			
			L	W	H	L	W	H	
half hall	5,000	53,800	99.6	50	10 - 16	326.7	164	32.8 - 52.5	3,500 pax
three-quarter	7,500	80,700	99.6	75	10 - 16	326.7	246	32.8 - 52.5	5,000 pax
full hall	9,822 - 10,043	105,685 - 108,063	99.6	96.4	10 - 16	326.7	316.2	32.8 - 52.5	8,000 pax

L= Length, W = Width, H = Height

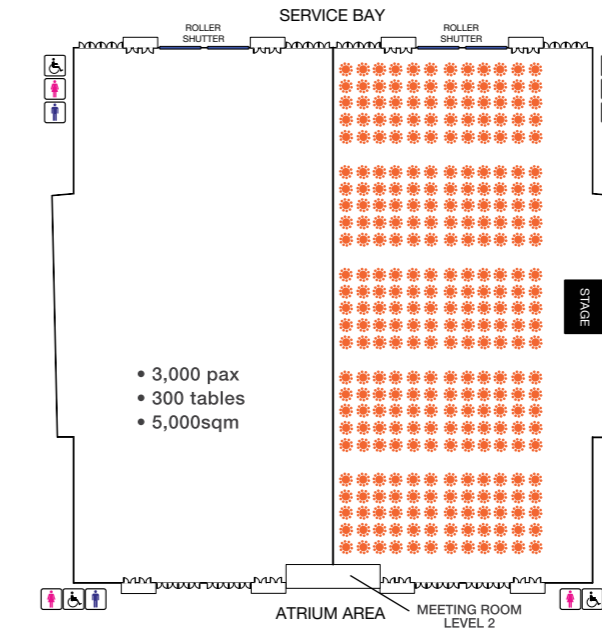
# banquet seating

configuration samples for halls 1 to 6

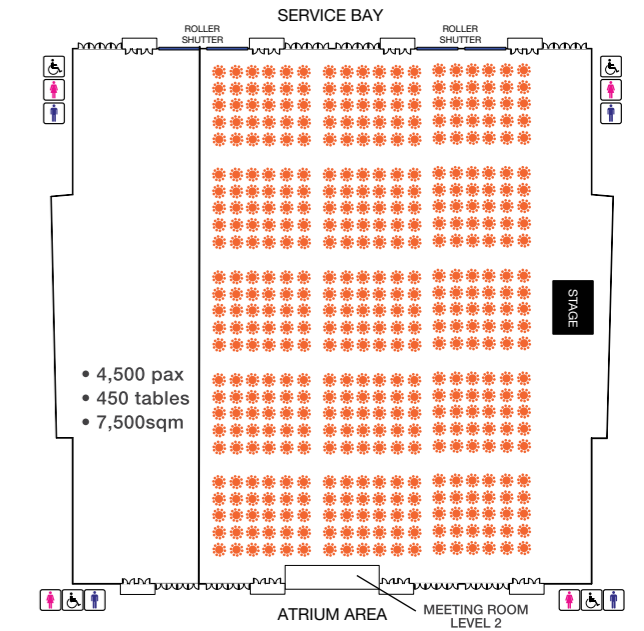
quarter hall



half hall



three-quarter hall



Plans shown are not drawn to scale

	gross floor plan		dimensions						capacity
	sqm	sqft	metre			feet			
			L	W	H	L	W	H	
quarter hall	2,500	26,900	50	50	10 - 16	164	164	32.8 - 52.5	1,500 pax
half hall	5,000	53,800	99.6	50	10 - 16	326.7	164	32.8 - 52.5	3,000 pax
three-quarter	7,500	80,700	99.6	75	10 - 16	326.7	246	32.8 - 52.5	4,500 pax
full hall	9,822 - 10,043	105,685 - 108,063	99.6	96.4	10 - 16	326.7	316.2	32.8 - 52.5	6,000 pax

L= Length, W = Width, H = Height

# convention exhibition halls 7 to 9



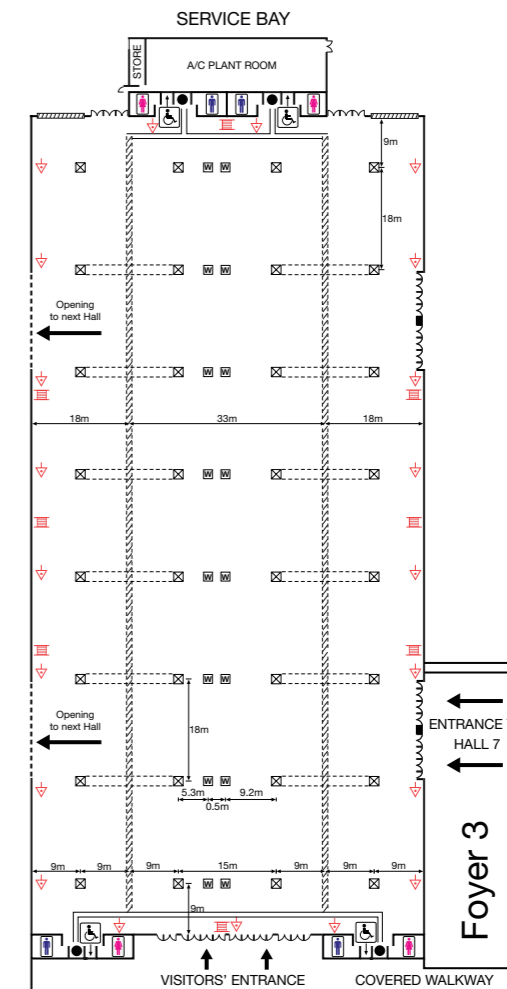
## general specifications of each hall

Area	<ul style="list-style-type: none"> <li>Ground-level, column-free space 9,936sqm (106,911sqft) of column-less space measuring 144m (L) X 69m (W) [472ft (L) X 226.3ft (W)]</li> <li>8m to 10m at bottom of trusses, 11.5m to 13.5m in between trusses</li> <li>exposed aluminium foil (radiant barrier) on mesh between purlins and exposed steel structures</li> </ul>
Ceiling Height	<ul style="list-style-type: none"> <li>Panic-bolt doors (electronically controlled)</li> </ul>
Ceiling Materials	<ul style="list-style-type: none"> <li>Front of halls: 9 nos. of double-leaf doors</li> <li>4 nos. of single-leaf doors</li> </ul>
Entrance & Exits	<ul style="list-style-type: none"> <li>Rear of halls: 6 nos. of double-leaf doors</li> </ul>
Hall 7 to 9 & The MAX Pavilion	<ul style="list-style-type: none"> <li>Side of halls: 12 nos. of double-leaf doors</li> <li>4 nos. of single-leaf doors</li> </ul>
Hall 7 & The MAX Pavilion	<ul style="list-style-type: none"> <li>Sealed concrete</li> <li>20kN/sqm or 417lb/sqft</li> <li>2 nos. per hall, each measuring 7.7m (W) X 7.5m (H) [25.3ft (W) X 24.6ft (H)]</li> <li>4 openings between each hall each measuring 8.2m (W) X 6m (H) with single-leaf roller shutter</li> </ul>
Flooring	<ul style="list-style-type: none"> <li>Width: 5m with 1.5m overhang at sides</li> </ul>
Floor loading	<ul style="list-style-type: none"> <li>Height: 4m at Foyer 3 to 6.5m at Foyer 2</li> </ul>
Freight doors	<ul style="list-style-type: none"> <li>At front and rear of halls</li> <li>4 male, 4 female and 4 toilets for the physically challenged for Hall 7 &amp; 8</li> <li>3 male, 5 female and 4 toilets for the physically challenged for Hall 9 &amp; TMP</li> </ul>
Hall Connectivity	
Foyer 2 to Foyer 3 Linkway	
Toilets	

## mechanical & electrical specifications of each hall

CATV	<ul style="list-style-type: none"> <li>Nil</li> </ul>
Ceiling lighting	<ul style="list-style-type: none"> <li>300 Lux</li> <li>4 sets of 40 X RJ45 and 3 pair multi-mode fibre optic points (front 2 sets &amp; rear 2 sets) per hall</li> </ul>
Communication	<ul style="list-style-type: none"> <li>Foyer 3</li> <li>2 data points and 2 telephone points</li> </ul>
Compressed Air	<ul style="list-style-type: none"> <li>Nil</li> </ul>
Distribution Boards	<ul style="list-style-type: none"> <li>2 sets each at front and rear of hall</li> <li>Each DB: <ul style="list-style-type: none"> <li>6 nos. 32amps - single-phase outlets</li> <li>1 nos. 32 amps - 3 phase outlets</li> <li>1 nos. 63 amps - 3 phase outlets</li> <li>1 nos. 200 amps - 3 phase terminal Mccb</li> <li>1 nos. 100 amps - 3 phase terminal Mccb</li> <li>1 nos. 63 amps - 3 phase terminal Mccb</li> </ul> </li> <li>Foyer 3</li> <li>2 sets of 6 nos. 13amp switch socket outlets</li> </ul>
Entrance	<ul style="list-style-type: none"> <li>2 sets of 100mm X 100mm opening in a lockable enclosure are available to tap additional requirement from the hall</li> </ul>
Electrical Loading	<ul style="list-style-type: none"> <li>500KVA per hall</li> </ul>
Fire Protection System	<ul style="list-style-type: none"> <li>Fire sprinkler system, hose reels, extinguishers and manual call points are available</li> </ul>
PA System	<ul style="list-style-type: none"> <li>Hall 7-9 • Available for paging and announcements</li> <li>Hall 10 • For emergency announcement only</li> <li>• Background music not available</li> </ul>
Security	<ul style="list-style-type: none"> <li>Electromagnetic door locking system for all doors with 3 CCTV cameras per hall</li> </ul>
Service Trenches	<ul style="list-style-type: none"> <li>Hall 7-9 • 2 nos. distribution trenches each measuring 600mm (W) X 600mm (D)</li> <li>• 2 nos. service trenches each measuring 600mm (W) X 400mm (D)</li> <li>• 12 nos. branch trenches each measuring 300mm (W) X 400mm (D)</li> <li>• 2 nos. conduits each measuring 110mm diameter branch out from the service trench at 4 locations</li> <li>• 24 nos. of sump pits each measuring 400mm (L) X 400mm (W) X 600mm (D)</li> </ul>

Suspension Points	<ul style="list-style-type: none"> <li>8 nos. of sump pits each measuring 300mm (L) X 300mm (W) X 250mm (D)</li> <li>2 nos. service trenches each measuring 150mm (W) X 200mm (D)</li> <li>32 nos. of sump pits each measuring 300mm (L) X 300mm (W) X 250mm (D)</li> </ul>
Ventilation	<ul style="list-style-type: none"> <li>105 points (on trusses at 9m apart)</li> <li>Loading: 1 tonne (1,000kg) per point</li> <li>Central air-conditioning with inflation system at 23°C</li> </ul>
Water Points	<ul style="list-style-type: none"> <li>hall 7-9 • 4 nos. water points in service trenches</li> <li>• 48 nos. water points in branch trenches</li> <li>hall 10 • 8 nos. water points at centre length of hall in sump pits</li> </ul>
Sewer Points	<ul style="list-style-type: none"> <li>Hall 7-9 • 4 nos. sewer points in service trenches</li> <li>• 48 nos. sewer points in branch trenches</li> <li>hall 10 • 8 nos. sewer points at centre length of hall in sump pits</li> </ul>

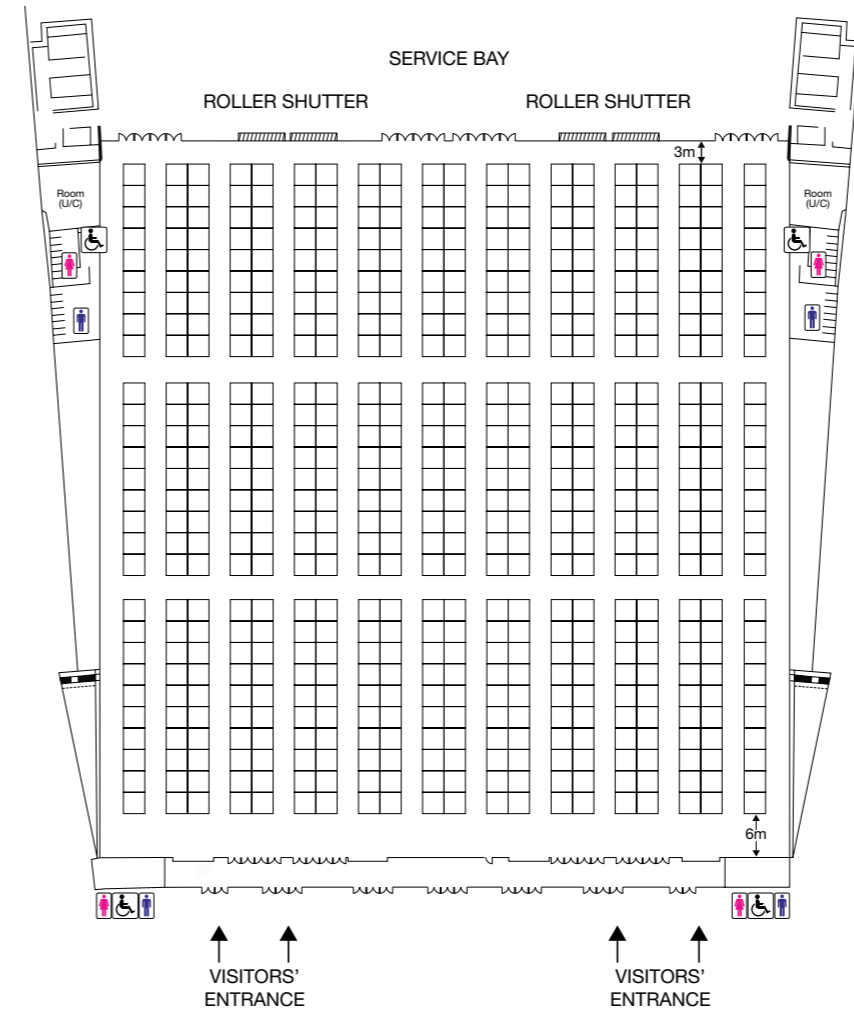


## legend

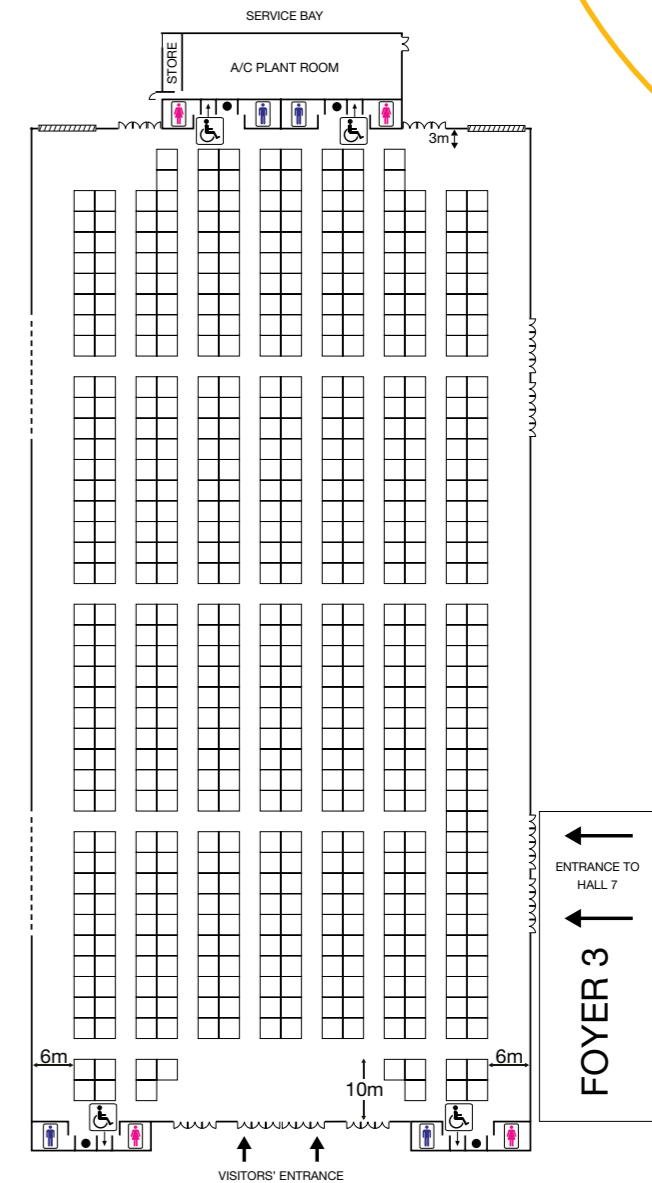
- Distribution Boards
- ☒ Fire Hose Reels
- ▽ Fire Extinguishers
- ▨ Freight Doors
- ♿ Toilets
- || Distribution trenches
- Branch trenches
- ⋮ Opening to next Hall
- ≡ Service trenches
- ⊗ Sump pits
- W Water / sewer points

## sample floor plans with 3m by 3m booths

Singapore EXPO can offer you flexible solutions for every event requirement. Due to the design and layout of each hall, all halls can easily be configured for large scale event set-ups. Each hall measures around 10,000sqm. Halls 1 to 6 allow for 60,000sqm of contiguous space and Halls 7 to 9 for 30,000sqm of combined column-free space.



**halls 1 to 6**  
approximately 600 booths



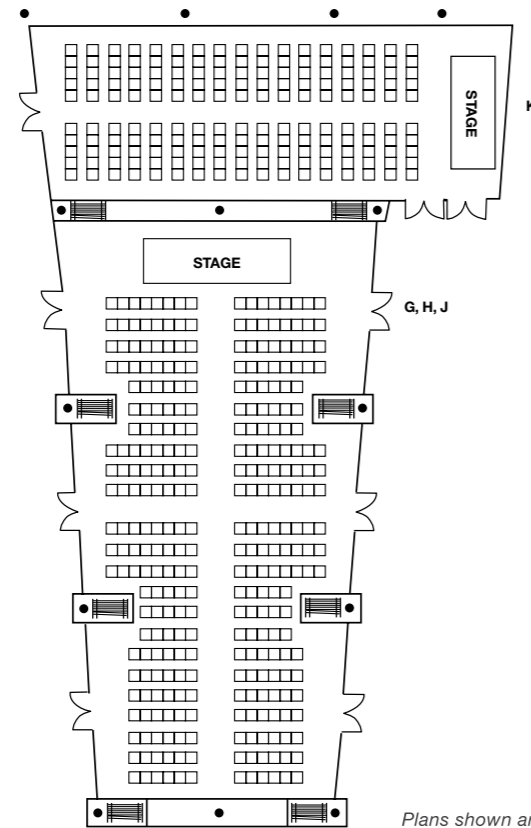
**halls 7 to 9**  
approximately 580 booths

*Plans shown are not drawn to scale*

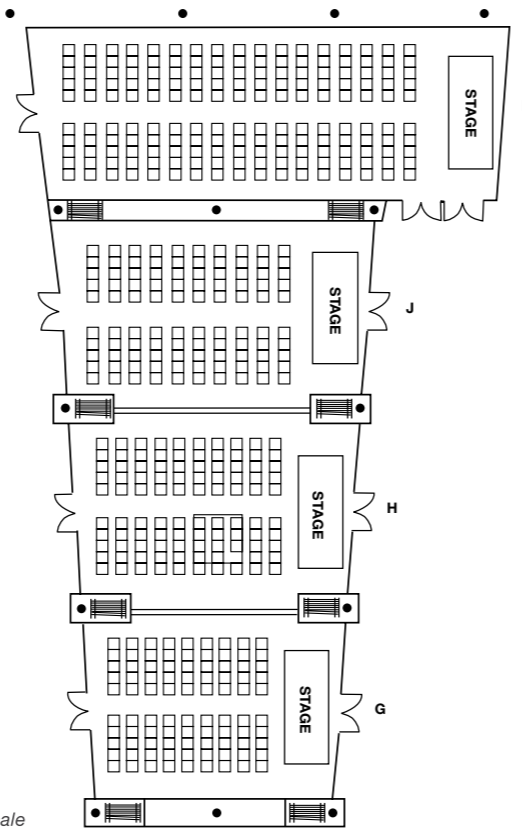
## conference halls G, H, J & K

Four conference halls are located on the ground-level between Halls 2 and 3. These column-free halls can be used individually or combined together. They are also ideal as secretariat rooms as well as backstage rooms for large scale events held in Halls 2 and 3.

combine hall layout (ch g, h, j)  
(theatre style)



individual hall layout  
(theatre style)

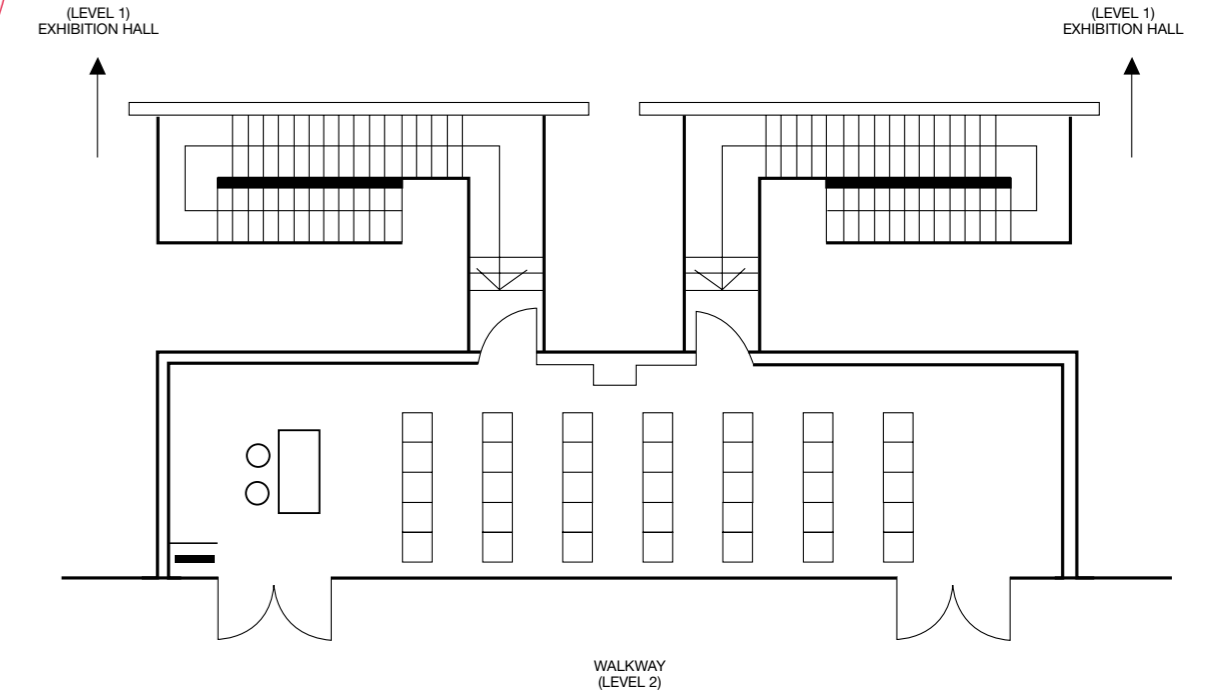


Plans shown are not drawn to scale

## meeting rooms 5 & 6

Meeting Rooms 5 & 6 (M5 to M6) are located above Halls 5 & 6 on the mezzanine floor. These rooms offer an overview of the activities in the halls and are suitable as VIP meeting rooms or organisers' office.

hospitality room layout  
(theatre style)



Plans shown are not drawn to scale

level 1 4 conference halls	floor area		dimensions						capacity		
	sqm	sqft	metre			feet			theatre	classroom	banquet
			L	W	H	L	W	H			
G	89	958	11.0	8.3	4.0	36.1	27.2	18.4	90	30	50
H	103	1,108	12.2	8.8	4.0	40.0	28.9	18.4	100	40	60
J	110	1,184	13.5	8.3	4.0	44.3	27.2	18.4	110	50	70
K	156	1,679	20.3	7.7	4.0	66.6	25.3	18.4	170	80	100
G, H & J	302	3,250	12.0	25.5	4.0	39.4	83.9	18.4	220	100	180

L= Length, W = Width, H = Height

level 2 meeting rooms (total: 2)	floor area		dimensions						capacity	
	sqm	sqft	metre			feet			theatre	classroom
			L	W	H	L	W	H		
each room	56	603	15.5	3.6	2.7	50.8	11.8	8.9	35	15

L= Length, W = Width, H = Height



Exclusively available at Singapore EXPO, the V-Room is a customised, flexible multi-purpose “In-Hall” designed and built mobile room.

**the v-room offers an ideal solution for:**

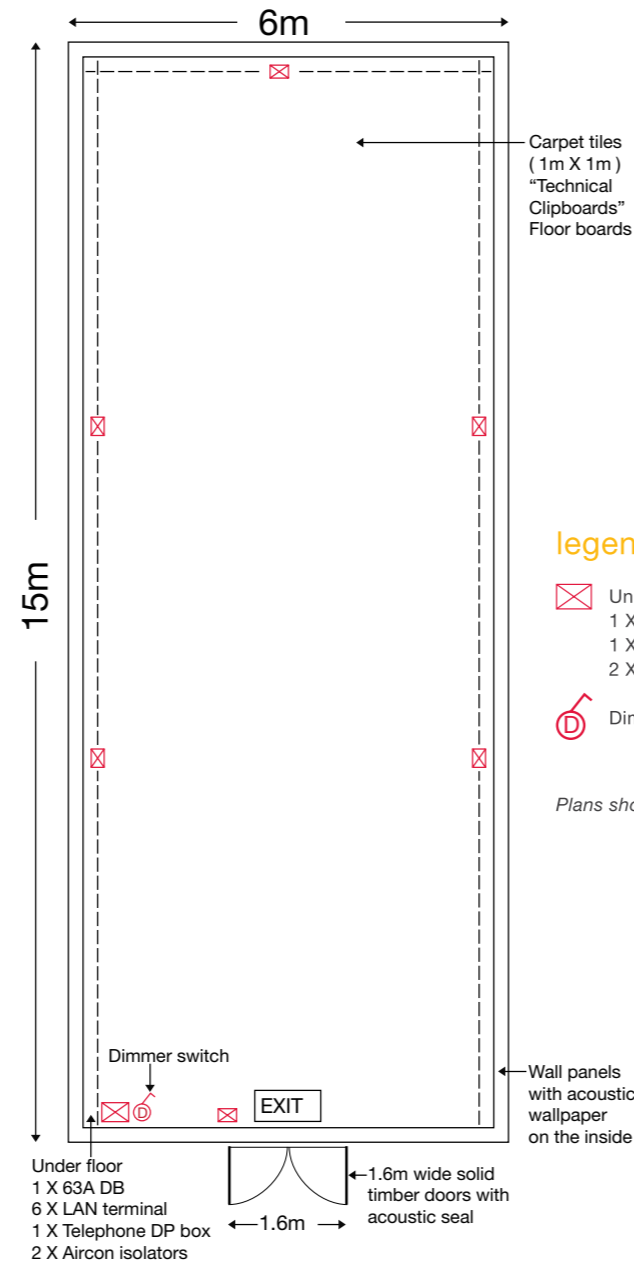
- Board meetings
- Conference break-out sessions
- In-hall meetings
- VIP suites
- Organisers’ office
- Speakers’ room
- Press room
- Changing rooms
- Presentation rooms

**key features**

- Each unit is mobile
- Each unit can accommodate approximately 80 pax theatre-style
- Units can be combined to achieve different sizes
- Wall panels and floor boards are acoustically treated
- Wall panels are designed for quick removal and installation

**specifications of each v-room**

- 1) Dimension: 15m (L) X 6m (W) X 3.2m (H)
- 2) Weight: Approximately 5 tonnes
- 3) Mobile on wheels (Height of 0.25m)
- 4) Can accommodate up to 88 pax theatre-style
- 5) Units can be combined to achieve different sizes
- 6) Wall panels are designed for quick removal and installation
- 7) Membrane roof
- 8) Mineral ceiling boards
- 9) Dimmable controlled lighting
- 10) Two units of aircon
- 11) Six floor access positions with each
  - 1 X LAN point
  - 1 X telephone point
  - 2 X power points
- 12) The total number of V-Room units available is four, subject to availability

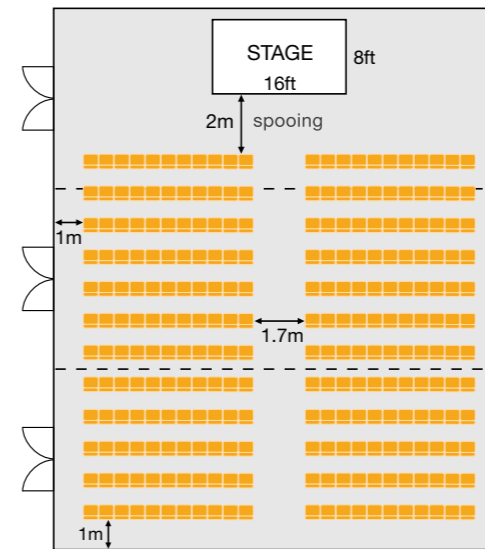
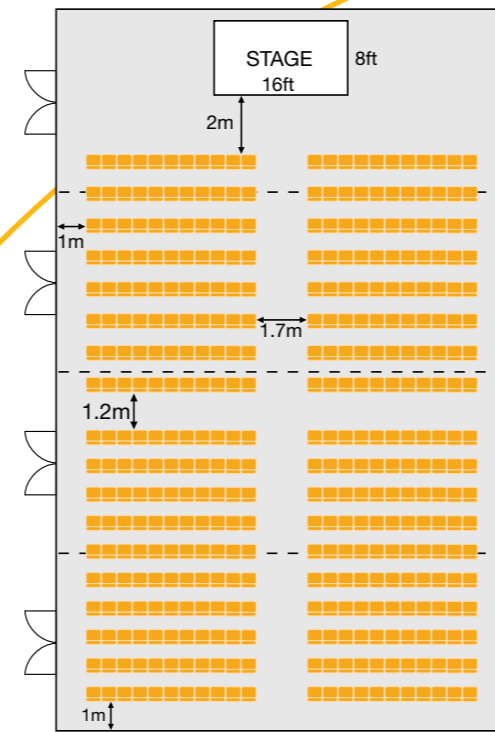


**legend**

- ⊠ Under Floor  
1 X LAN point  
1 X Telephone point  
2 X Aircon isolators
- Ⓛ Dimmer switch

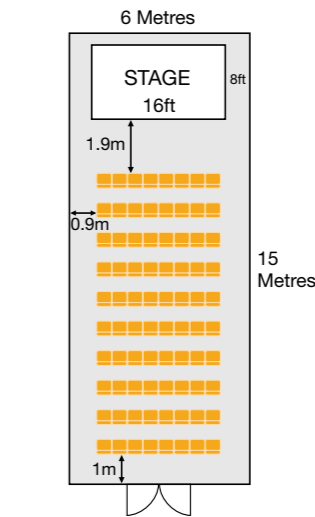
Plans shown are not drawn to scale

**theatre-style configuration for v-rooms**



**audio visual & presentation specifications for conference halls & v-rooms**

rooms	projector	screen dimensions (W X H)		av & stage	lighting
	type	metre	feet	type	
G	portable	2.4 X 2.15	7.9 X 7.0	portable	portable
H	portable	3.2 X 2.4	10.5 X 7.9		
J	portable	5.0 X 4.0	16.4 X 13.1		
K	portable	3.5 X 3.0	11.5 X 9.8		
V-Rooms 1 to 4	portable	2.4 X 2.1	7.9 X 6.9		



L = Length, W = Width, H = Height

	floor area		dimensions						capacity
	sqm	sqft	metre			feet			theatre
			L	W	H	L	W	H	
1-room	90	968	15	6	3.2	49.2	19.7	10.5	80
2-room combination	180	1,937	15	12	3.2	49.2	39.4	10.5	176
3-room combination	270	2,905	18	15	3.2	59.0	49.2	10.5	288
4-room combination	360	3,874	24	15	3.2	78.7	49.2	10.5	352



# POSSIBILITIES

MAKE SPACE FOR POSSIBILITIES MAKE SPACE FOR

# MAKE SPACE FOR

# FOR POSSIBILITIES

# MAKE SPACE

Singapore EXPO Convention and Exhibition Centre is managed by:



**Singex Venues Pte Ltd**

1 Expo Drive, #02-01, Singapore 486150

T +65 6403 2160 F +65 6822 2616

[www.singaporeexpo.com.sg](http://www.singaporeexpo.com.sg) [sales@singaporeexpo.com.sg](mailto:sales@singaporeexpo.com.sg)